

# Lect 25 Zero energy scattering, bound states, resonances ①

● § zero energy scattering (low energy limit — non-perturbative)

Let us consider a short-range scattering potential, the s-wave WF can be written as  $\psi = \frac{1}{\sqrt{4\pi}} R_0(r) = \frac{u(r)}{r}$ , where  $u(r)$  satisfies

$$\frac{d^2}{dr^2} u + \left[ k^2 - \frac{2m}{\hbar^2} V(r) \right] u = 0, \text{ where } k = \sqrt{\frac{2mE}{\hbar^2}}.$$

AMPAD  
Ex: please prove this Eq.

Consider the limit of  $k \rightarrow 0$ , at  $r > R$ , where  $R$  is the interaction range, we have  $\frac{d^2}{dr^2} u = 0 \Rightarrow u(r) = \text{const.} \cdot \left(1 - \frac{r}{a_0}\right)$

● if  $a_0 = 0 \Rightarrow u(r) \propto r \propto \sin kr$  (no-phase shift, free space)

$a_0 \rightarrow \pm \infty \Rightarrow u(r) \propto \text{const} \propto \sin\left(kr + \frac{\pi}{2}\right)$  (maximum phase shift strong scattering!)

Now let us relate  $a_0$  with the phase shift  $\delta_0$  and scattering amplitude  $f_0$ .

$$\text{at } r > R, \quad u(r) \simeq A \sin(kr + \delta_0) = A [\sin \delta_0 + \cos \delta_0 \cdot kr] \\ \simeq (1 + k \cot \delta_0 r)$$

$$\Rightarrow \boxed{k \cot \delta_0(k) \Big|_{k=0} = -\frac{1}{a_0}}$$

If  $k \neq 0$ , but remains small, generally speaking, we expect

$k \cot \delta_0(k)$  is an even function of  $k$ .

Ex: prove the above conclusion.

we have the expansion

$$k \cot \delta_0(k) \simeq -\frac{1}{a_0} + \frac{k^2}{2} R \quad \text{at } k \rightarrow 0$$

later we will see  $R$  is the same order of interaction range, and thus we do not use a new symbol.

AMPAD

The scattering amplitude  $f_0 = \frac{\sqrt{4\pi}}{k} e^{i\delta_0} \sin \delta_0 = \frac{\sqrt{4\pi}}{k} \frac{1}{\cot \delta_0 - i}$

$$f_0 = \sqrt{4\pi} \frac{1}{k \cot \delta_0 - ik} = \sqrt{4\pi} \frac{1}{-\frac{1}{a_0} - ik + \frac{k^2}{2} R} = f_0$$

If  $a_0$  is finite  $\Rightarrow \delta_0 \simeq \tan \delta_0 \simeq -ka_0 \leftarrow$  hard sphere with radius  $a_0$

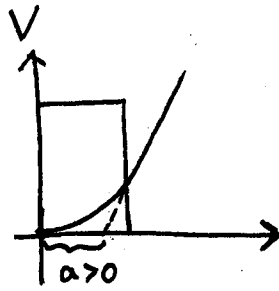
If  $a_0 \rightarrow \pm\infty$ ,  $\delta_0 = \pm \frac{\pi}{2}$ ,  $\Rightarrow f_0 = \frac{\sqrt{4\pi} i}{k}$

$$\Rightarrow \sigma_0 = \frac{4\pi}{k^2} = \frac{2\pi \hbar^2}{mE} \propto \frac{1}{E} \leftarrow \text{resonance scattering}$$

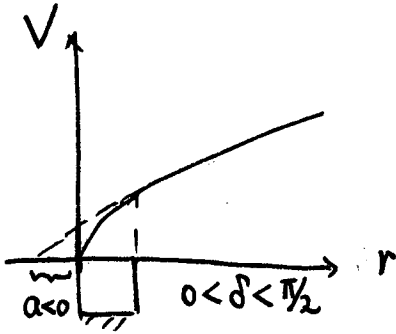
§ Evolution of  $\delta_0$  as varying interaction potential

In the case of attractive interaction, we will see  $\delta_0$  is quite complicated. A series of resonance scatterings appear as varying the depth of potential well.

repulsive potential

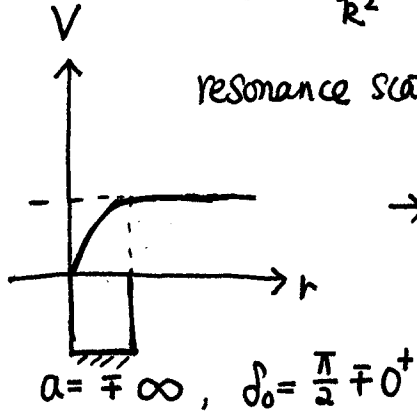


attractive potential



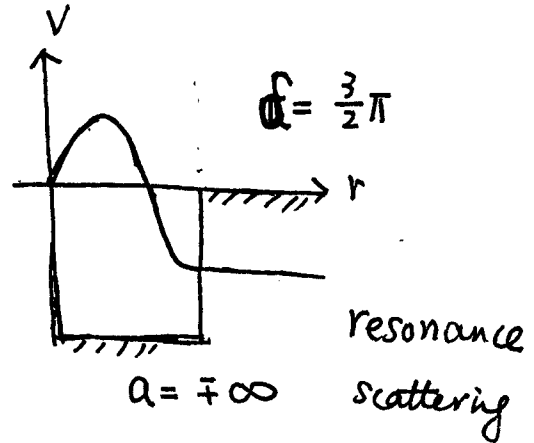
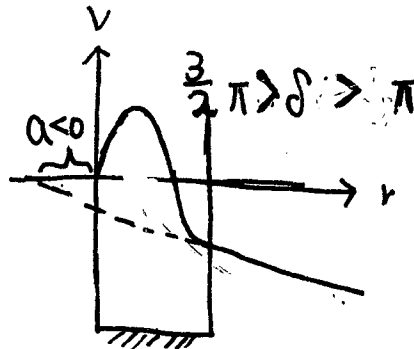
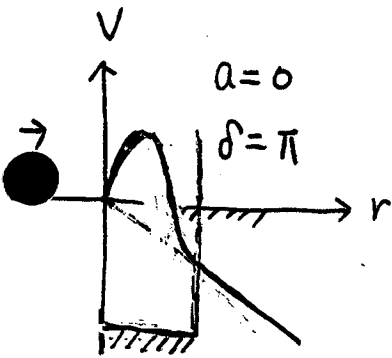
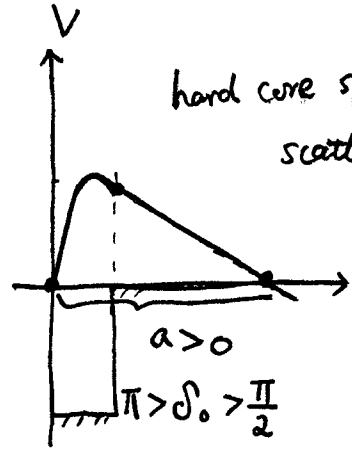
$$\sigma = \frac{4\pi}{k^2} a$$

resonance scattering

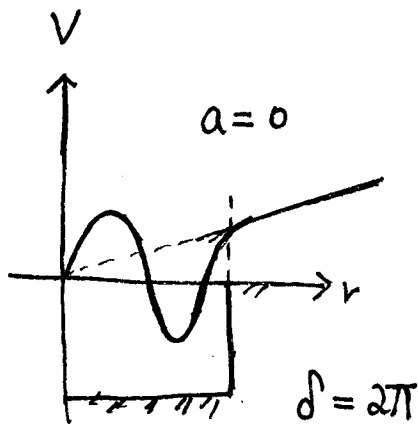
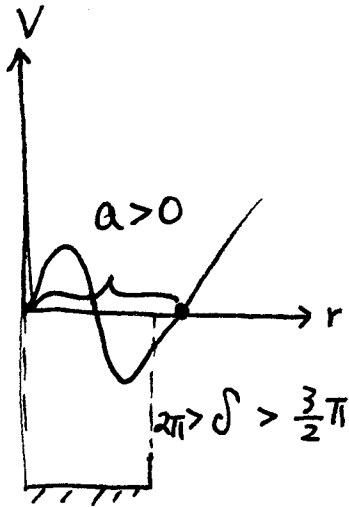


$$\sigma = 4\pi a^2$$

hard core sphere scattering



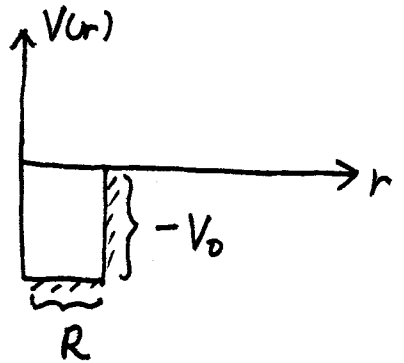
resonance scattering



### § Bound state:

The appearance of resonance is closely related to the bound state in the potential well.

Consider a spherical potential well problem and consider the case there's just a bound state at the top of the well.



$$\left\{ \begin{array}{l} \frac{d^2 u_b}{dr^2} + k_0^2 u_b = 0 \quad (r < R) \\ \frac{d^2 u_b}{dr^2} - \beta^2 u_b = 0 \quad (r > R) \end{array} \right. \quad k_0 = \sqrt{\frac{2mV}{\hbar^2}} \quad \beta \rightarrow 0^+, \quad u_b = r \psi_b(r)$$

$$\left. \begin{array}{l} \text{at } r < R, \quad u = \sin k_0 r \\ r > R, \quad u = A e^{-\beta r} \end{array} \right\} \Rightarrow \begin{array}{l} \frac{u'}{u} \Big|_{r=R} = k_0 \cot k_0 R \\ \frac{u'}{u} \Big|_{r=R} = -\beta e^{-\beta R} \end{array}$$

$$\Rightarrow k_0 \cot k_0 R = -\beta e^{-\beta R} \rightarrow 0 \text{ as } \beta \rightarrow 0^+$$

thus  $k_0 R \simeq (n + 1/2)\pi + 0^+$ , let's denote  $\Delta\delta = k_0 R - (n + 1/2)\pi$

$$k_0 R \cot k_0 R \simeq (n + 1/2)\pi \cot\left[\frac{\pi}{2} + \Delta\delta\right] = -(n + 1/2)\pi \Delta\delta$$

$$\Rightarrow \boxed{\beta R = (n + 1/2)\pi \Delta\delta} \leftarrow \text{localization length}$$

Now let us consider the zero energy scattering states.

$$\left\{ \begin{array}{l} \frac{d^2 u_s}{dr^2} + k_0^2 u_s = 0 \quad (r < R) \\ \frac{d^2 u_s}{dr^2} + k^2 u_s = 0 \quad (r > R) \end{array} \right. \quad \begin{array}{l} u_s = r \psi_s(r) \\ k = \sqrt{\frac{2mE}{\hbar^2}} \end{array}$$

at  $r < R$ ,  $u_s \simeq u_b \simeq \sin k_0 r$

$r > R$   $u_s \simeq A \sin(kr + \delta_0)$

match boundary condition  $\frac{u'_s}{u_s} \Big|_{r=R^+} = \frac{u'_s}{u_s} \Big|_{r=R^-}$

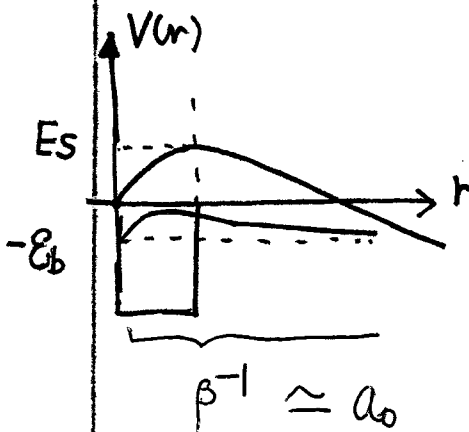
$kR \cot(kR + \delta_0) = k_0 R \cot k_0 R = -\beta R e^{-\beta R}$  and  $\begin{cases} \beta R \rightarrow 0 \\ kR \rightarrow 0 \end{cases}$

$\Rightarrow kR \cot \delta_0 \simeq -\beta R \Rightarrow \frac{1}{a_0} = k \cot \delta_0 = -\beta \Rightarrow a_0 = \beta^{-1} > 0$

thus  $f_0 = \sqrt{4\pi} \frac{1}{k \cot \delta_0 - ik} = \frac{-\sqrt{4\pi}}{\beta + ik} = \frac{-\sqrt{4\pi}}{\beta + i\sqrt{\frac{2mE}{\hbar^2}}}$

Again the bound state  $E_b = -\frac{\hbar^2 \beta^2}{2m}$  can be obtained as the pole of  $f_0(E)$  in the first Riemann sheet; i.e.  $\sqrt{\frac{2mE_b}{\hbar^2}} = i\beta$ .

⊗ When there is just a true bound state below the top of the well, the scattering length  $a_0 > 0$ , which approximately equals to the localization length of the shallow bound state  $\beta^{-1}$ .



as  $E_b \rightarrow 0$ ,  $a_0 \rightarrow +\infty$

condition for the first resonance

$k_0 R = \frac{\pi}{2} + 0^+$

Scattering state v.s. bound state

\* If the well is made even shallower,  $k_0 R < \frac{\pi}{2}$ , there will be no bound state. Denote  $\Delta\delta = k_0 R - \frac{\pi}{2} < 0 \Rightarrow$

$$kR \cot(kR + \delta_0) = k_0 R \cot k_0 R \simeq \frac{\pi}{2} \cot \left[ \frac{\pi}{2} + \Delta\delta \right] = -\frac{\pi}{2} \Delta\delta$$

$$kR \cot \delta_0 = -\frac{\pi}{2} \Delta\delta \Rightarrow \frac{-1}{a_0} = k \cot \delta_0 = -\frac{\pi}{2R} \Delta\delta$$

AMPAD

or  $a_0 = \frac{2}{\pi} \frac{R}{\Delta\delta} < 0.$

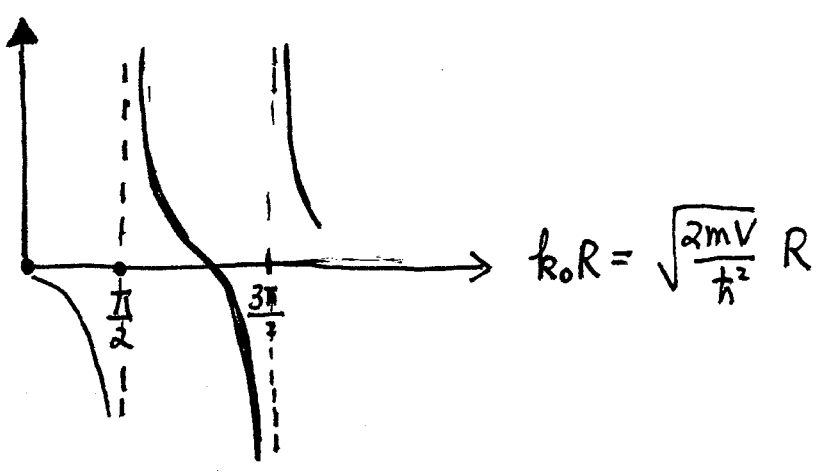
\* Combine  $k_0 R = \frac{\pi}{2} \pm 0^+$  cases together, we have

$$a_0 = \frac{R}{\pi/2} \frac{1}{k_0 R - \pi/2} \simeq \frac{1}{k_0} \frac{1}{k_0 R - \pi/2} \quad \text{where } k_0 = \sqrt{\frac{2mV}{\hbar^2}}$$

more generally, if  $k_0 R \simeq (n + \frac{1}{2})\pi$ , we have

$$a_0 \simeq \frac{1}{k_0} \frac{1}{k_0 R - (n + \frac{1}{2})\pi}$$

As we deepen the potential well, more and more bound states are trapped, and  $a_0$  oscillates.



\* Near the resonances, the cross section and scattering length have no dependence on  $R, V_0$  (microscopic parameters). This is the virtue of resonance scattering.

$$f_0 = \frac{\sqrt{4\pi}}{-\frac{1}{a_0} - ik} \Rightarrow \sigma = |f_0|^2 = \frac{4\pi \hbar^2}{2m(E_k + |E_b|)} \xrightarrow{E_b \rightarrow 0} \frac{4\pi \hbar^2}{2m E_k}$$

$$k \cot \delta_0 = -\frac{1}{a_0} \xrightarrow{a_0 \rightarrow \pm \infty} \delta_0 = \frac{\pi}{2}, \frac{3\pi}{2}, \dots$$

AMPAD

Ramsauer - Townsen effect

as  $k_0 R \sim n\pi$ , then the phase shift  $\rightarrow \delta_0 \sim n\pi$ ,

scattering length  $a_0 \rightarrow 0$ , we get perfect transmission.

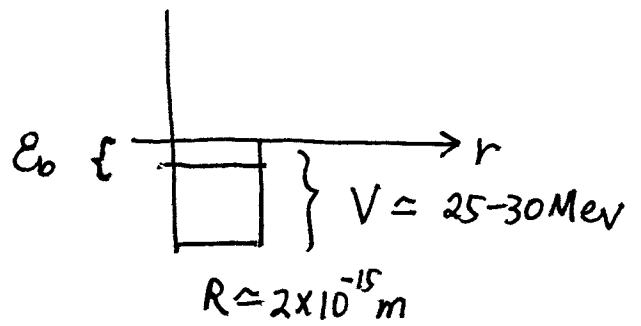
\* example of shallow bound state (nuclear physics).

hot neutron scattering on proton. There's a bound state D with  $E_b = +2.23 \text{ MeV}$ .

hot neutron  $E_k \approx \frac{1}{40} \text{ eV}$

reduced mass  $\mu \approx \frac{m}{2}$

$$k = \sqrt{\frac{2\mu E}{\hbar^2}} = 1.7 \times 10^{10} \text{ m}^{-1}$$



$kR \approx 3.5 \times 10^{-5} \ll 1$ , which the limit of zero energy scattering

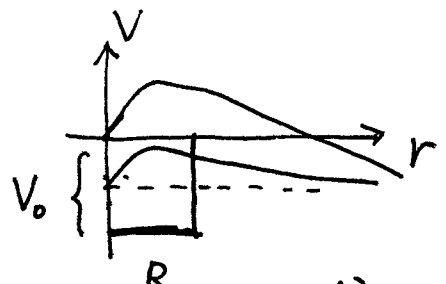
$$a_0 \text{ measured} \approx 5.4 \times 10^{-15} \text{ m} \Rightarrow E_{b, \text{estimated}} \approx \frac{\hbar^2}{2\mu a^2} = 1.4 \text{ MeV}$$

\* The relation between scattering length and bound state decay length

(to  $k^2$  order)

For scattering state, the boundary condition

at  $r=R \Rightarrow$



$$\textcircled{1} k \cot(kR + \delta_0) = k_1 \cot k_1 R, \text{ where } k_1 = (k^2 + k_0^2)^{1/2} \simeq k_0 + \frac{k^2}{2k_0}$$

bound state  $E_b = -\frac{\hbar^2 \beta^2}{2m}$

$$\textcircled{2} k' \cot k' R = -\beta, \text{ where } k' = \sqrt{k_0^2 - \beta^2} = k_0 - \frac{\beta^2}{2k_0}$$

From  $\textcircled{2}$   $(k_0 - \frac{\beta^2}{2k_0}) \cot(k_0 R - \frac{\beta^2}{2k_0} R) = -\beta$

$$\cot(k_0 R - \frac{\beta^2}{2k_0} R) = -\frac{\beta}{k_0} \frac{1}{1 - \beta^2/2k_0^2} \simeq -\beta/k_0$$

$$\cot(\frac{\pi}{2} + k_0 R - \frac{\pi}{2} - \frac{\beta^2}{2k_0} R) = -\tan[k_0 R - \frac{\pi}{2} - \frac{\beta^2}{2k_0} R] \Rightarrow$$

$$k_0 R - \frac{\pi}{2} - \frac{\beta^2}{2k_0} R = \beta/k_0 \Rightarrow \boxed{k_0 R - \frac{\pi}{2} = \frac{\beta}{k_0} + \frac{\beta^2 R}{2k_0}}$$

From  $\textcircled{1}$

$$k \cot(kR + \delta_0) = k \frac{1 - \tan kR \cot^{-1} \delta_0}{\tan kR + \cot^{-1} \delta_0} = k \frac{\cot \delta_0 - \tan kR}{1 + \cot \delta_0 \tan kR}$$

$$\simeq \frac{k \cot \delta_0 - k^2 R}{1 + k \cot \delta_0 R}$$

$$k_1 \cot k_1 R = (k_0 + \frac{k^2}{2k_0}) \cot[\frac{\pi}{2} + (k_0 R - \frac{\pi}{2}) + \frac{k^2}{2k_0} R]$$

$$\simeq (k_0 + \frac{k^2}{2k_0}) (-) \tan[\frac{\beta}{k_0} + \frac{k^2 + \beta^2}{2k_0} R]$$

$$\simeq (-) k_0 (\frac{\beta}{k_0} + \frac{k^2 + \beta^2}{2k_0} R) \simeq -\beta - \frac{1}{2}(\beta^2 + k^2) R$$



$$\Rightarrow \frac{kR \cot \delta - (kR)^2}{1 + kR \cot \delta} = -\beta R - \frac{1}{2}(\beta^2 + k^2)R^2$$

$$kR \cot \delta = [-\beta R - \frac{1}{2}(\beta^2 + k^2)R^2](1 + kR \cot \delta) + (kR)^2$$

① zero-th  $kR \cot \delta = -\beta R$

② next order  $kR \cot \delta = (-\beta R - \frac{1}{2}(\beta^2 + k^2)R^2)(1 - \beta R) + (kR)^2$   
 $\approx -\beta R + \frac{1}{2}(k^2 + \beta^2)R^2$

AMPAD

$$\Rightarrow k \cot \delta = -\left(\beta - \frac{\beta^2}{2}R\right) + \frac{k^2}{2}R$$

$\swarrow$   
 $-\frac{1}{a_0}$